

Your Bonus Accessory Pack is warranted to be free from defects in material and workmanship for a period of one (1) from the date of delivery when utilized for normal household use by the original purchaser only. The included Warranty Registration Card must be filled out and returned within 10 days of purchase. This is essential for your Warranty to be effective should any problem arise with this product.

Should any defect covered by the terms of the limited warranty be discovered within one year, **EURO-PRO** Operating LLC will repair or replace any defective part provided the unit is returned by the original purchaser, freight prepaid, to:

EURO-PRO Operating LLC., 94 Main Mill street, Door 16, Plattsburgh, NY 12901 Tel.: (800) 798-7398

Proof of purchase date and \$ 8.95 for handling and return packing/shipping charges must be included.*

The liability of under this warranty is limited solely to the cost of the replacement parts or the complete unit at our option. **LABOUR CHARGES ARE NOT INCLUDED.**

This warranty does not cover normal wear of parts and does not apply to any unit that has been tampered with or used for commercial purposes. This Limited Warranty does not cover damage caused by misuse, negligent handling, or damage due to faulty packaging or mishandling in transit (by any common carrier).

This warranty is extended to the original purchaser of the unit and excludes all other legal and/or conventional warranties. The responsibility of **EURO-PRO** Operating LLC, if any, is limited to the specific obligations expressly assumed by it under the terms of the limited warranty. In no event is **EURO-PRO** Operating LLC liable for incidental or consequential damages of any nature whatsoever. Some States/Provinces do not permit the exclusion or limitation of incidental or consequential damages, so the above may not apply to you.

This warranty gives you specific legal rights which vary from state to state or province to province.

*Important: Carefully pack item to avoid damage in shipping. Be sure to attach tag to item before packing with your name, complete address and phone number with note giving purchase information, model number and what you believe is the problem with item. We recommend you insure the package (as damage in shipping is not covered by your warranty). Mark the outside of your package "ATTENTION CUSTOMER SERVICE".

We are constantly striving to improve our products, therefore the specifications contained herein are subject to change without notice.

Bonus Accessory Pack for Model SC410

Angle Adaptor Not Included.
Shown Assembled to Triangle
Brush for Application Only

Concentrator Not Included.
Shown Assembled to
Wallpaper Scraper for
Application Only

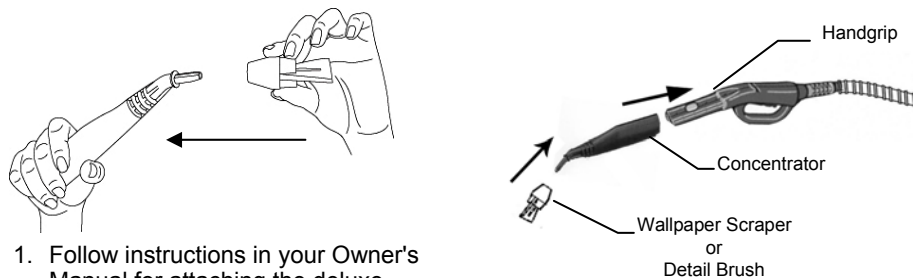


- 1) Triangle Brush
- 2) Detail Brush (2 pcs.)
- 3) Wallpaper Scraper

WARNING: Always insure the unit is "UNPLUGGED" from the wall receptacle prior to attaching or removing accessories.

All accessories in the Bonus Pack can only be used with the deluxe hose or with the extension tubes.

Using the Wall Paper Scraper



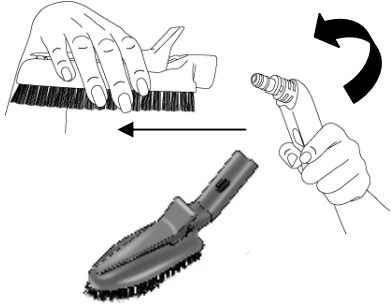
1. Follow instructions in your Owner's Manual for attaching the deluxe hose to the steam cleaner accessories.
2. To attach the 2.5 mm concentrator to the deluxe hose, push it in until the locking button on the deluxe hose clicks in place with the hole on the 2.5 mm concentrator. See illustration at right.
3. To attach the wallpaper scraper to the concentrator, just push it in to the end of the concentrator.

OPERATING INSTRUCTIONS

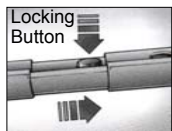
WARNING: Always insure the unit is “UNPLUGGED” from the wall receptacle prior to attaching or removing accessories.

Using Your Steam Cleaner with Triangular Brush

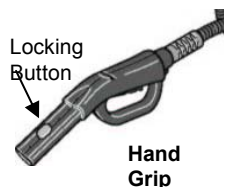
To attach the triangular brush to the angle adapter, hold angle adapter in your right hand and the brush in your left. Insert the angle adapter into the triangular brush and turn 180° to lock in place. See illustrations below.



Step 1: The triangle brush w/ angle adaptor connects either directly to the handgrip or may be used with the extension tubes. To connect the extension tubes to the hand grip attach the extension tubes one onto the other and then onto the hand grip. (See illustrations.) To disconnect, reverse the operation by pressing the locking button and pulling the two sections apart.



Extension Tubes



Attaching a Towel to the Triangular Brush

100% white terry cloth towel can be fitted on this brush, so as to absorb the dirt and protect delicate surfaces.

Important: Please note that bristles may break through thin towels. We recommend that two (2) towels, laid one on top of the other be used. This will ensure that the brush bristles do not break through and that the towels will be sufficiently absorbent and retain as much dirt as possible.

Very Important: When installing the towels to the triangular brush, ensure that the towels do not cover the front and the back of the brush. (See fig. D)

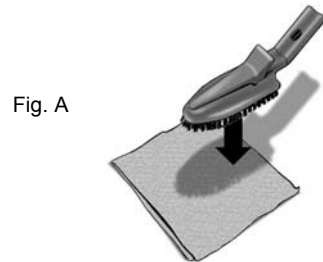


Fig. A

1. Prepare white terry cloth towel: size 8" x 17" as shown in Fig. A.
2. Place the brush on top of the towel.

OPERATING INSTRUCTIONS cont.

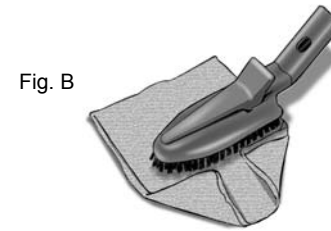


Fig. B

3. Fold the towel as shown in Fig. B

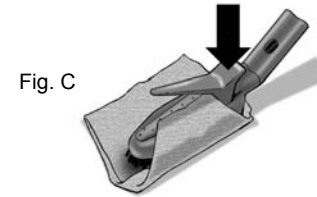


Fig. C

4. Place the corner under the cloth holder. (Fig. C)



Fig. D

5. Fold the other side of the towel in the same way and place the corner under the cloth holder. (Fig. D).